
February 2018

Harrison East HOA

BPM Contact: (503) 334-2198

bpminquiry@bpmmgmt.com

BPM Emergency: (503) 796-9580

HE NewsSheet!

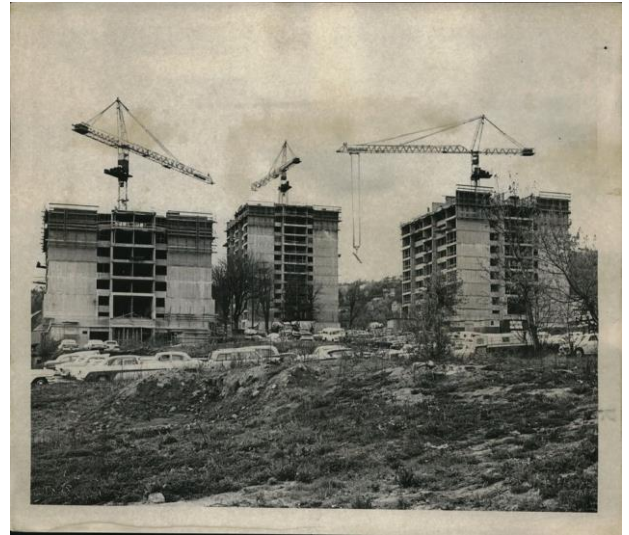
Harrison East 10th Anniversary!

Our Harrison East is part of the landmark trio of three high-rise towers at the heart of the 1950's 55-block urban renewal area that transformed the skyline and character of southwest Portland. The newly established Portland Development Commission identified South Auditorium Project as its first urban renewal endeavor. A consortium of investors teamed up with the renowned architectural firm Skidmore, Owings & Merrill (SOM) to build a "city within a city." They called it Portland Center. SOM designed three mid-century modern apartment towers surrounded by plazas, fountains, and parks.

The residential towers celebrated simple modernist ideals: efficient floor plans and balconies for all units. The evolving concrete technology of the time, which employed inventive European forming systems, facilitated functionality and affordability. The towers created the population density needed for the neighborhood to thrive and became a visual exclamation point on the skyline of southwest downtown.

The careful renovation and repositioning of the Harrison towers as condominiums and apartments in 2006-2008 have honored the modernist spirit of the original architecture, while adding distinctive new graphic colorations, a state-of-the-art window wall system, and appropriate updates of public and private interior spaces.

Harrison East has made further enhancements that acknowledge the design excellence of the building with landscape, lighting, and interior interventions. Classic modern wall lights (in production since 1957) grace the entry, while a completely contemporary chandelier hangs



Harrison Towers under construction, April 1965.
Harrison East on the left.
The Oregonian

from a "John Yeon blue" canopy, that gives even gray days a bit of blue sky. A photo art program was commissioned to appoint the lobby and halls with black and white images that capture the details of the Halprin landscape, thus tying Harrison East once again to our historic site.

As residents of these unique buildings in the midst of this landscape masterwork, we proudly celebrate the 50th anniversary of the place we call home.

Many thanks to Louise Roman and Will Bruder, who wrote this brief history of the buildings and the Halprin Sequence. (More about the Sequence next month.) Louise, an interior designer, and Will, an architect, are the Harrison East owners who designed the lobby and placed the Halprin Sequence photos throughout the building.